

CP1163

20.5 MM

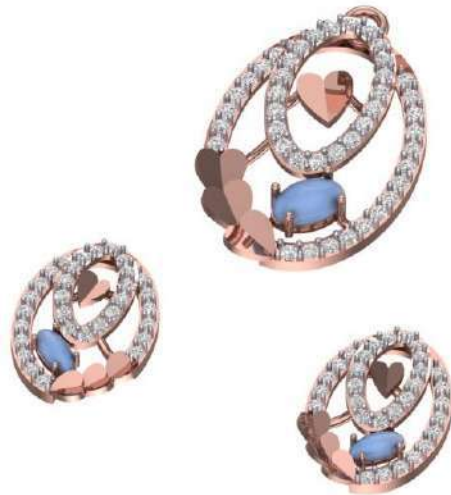


13 MM



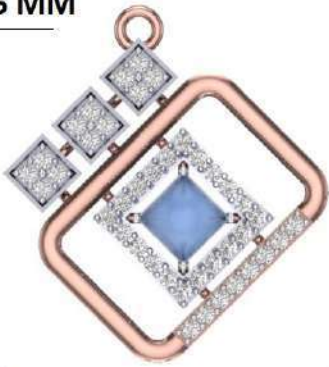
PND
1.30MM-43 PCS
STONE SIZE
5.00X3.00MM-1 PCS
GWT - 2.2 GM (18 KT)

ER
1.10MM-62 PCS
STONE SIZE
4.00X2.00MM-2 PCS
GWT - 2.00 GM (18 KT)



CP1162

22.6 MM



13 MM



PND
1.30MM-40 PCS
STONE SIZE
4.50X4.50MM-1 PCS
GWT - 2.4 GM(18 KT)

ER
1.10MM-16 PCS
1.20MM-10 PCS
STONE SIZE
3.00X3.00MM-2 PCS
GWT - 1.8 GM (18 KT)



CP1161

30.5 MM



21 MM



PND
1.30MM-47 PCS
1.80MM-10 PCS
STONE SIZE
6.00X4.00MM-1 PCS
GWT - 2.8 GM (18 KT)

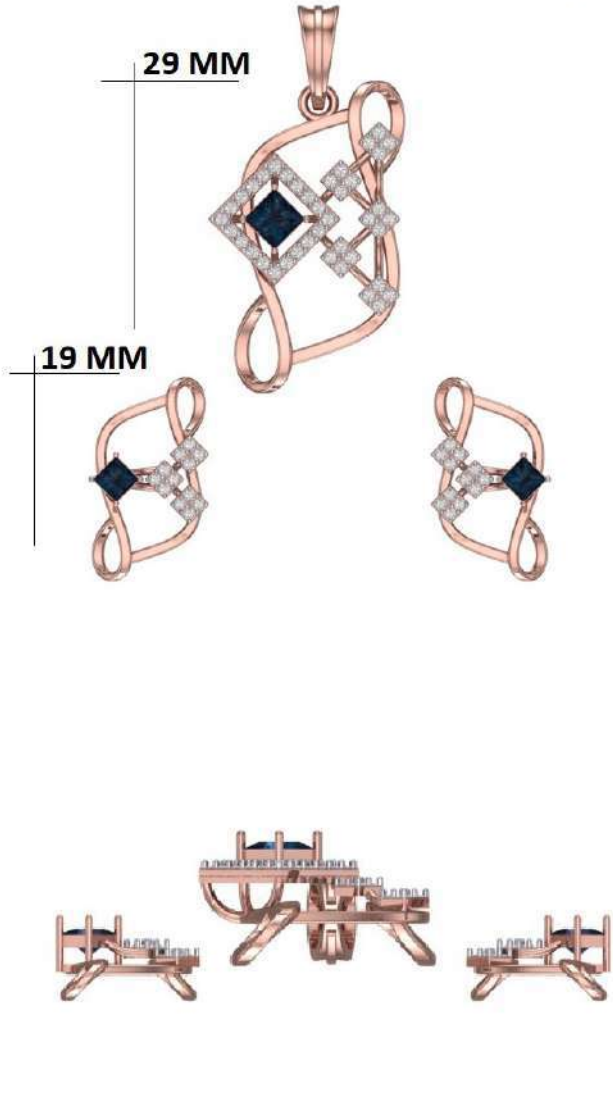
ER
1.30MM-64 PCS
1.80MM-12 PCS
STONE SIZE
4.50X3.00MM-2 PCS
GWT - 3.2 GM(18 KT)



CP1160

PND
1.20MM-40 PCS
STONE SIZE
4.00X4.00MM-1 PCS
GWT - 3.6 GM (18 KT)

ER
1.10MM-24 PCS
STONE SIZE
3.00X3.00MM-2 PCS
GWT - 2 GM (18 KT)



CP1134

PND
1.20MM-10 PCS
1.30MM-38 PCS
1.40MM-10 PCS
GWT - 2.7 GM (18 KT)

ER
1.00MM-12 PCS
1.20MM-66 PCS
GWT - 2.80 GM (18 KT)



CP1133

30 MM

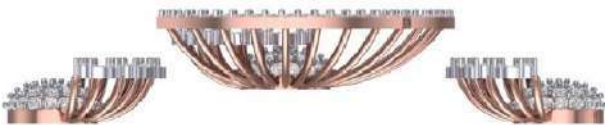


18 MM



PND
1.20MM-14 PCS
1.30MM-83 PCS
STONE SIZE
2.50X1.25MM-14 PCS
GWT - 4.8 GM (18 KT)

ER
1.20MM-20 PCS
1.30MM-72 PCS
STONE SIZE
2.50X1.25MM-20 PCS
GWT - 3.00GM (18 KT)



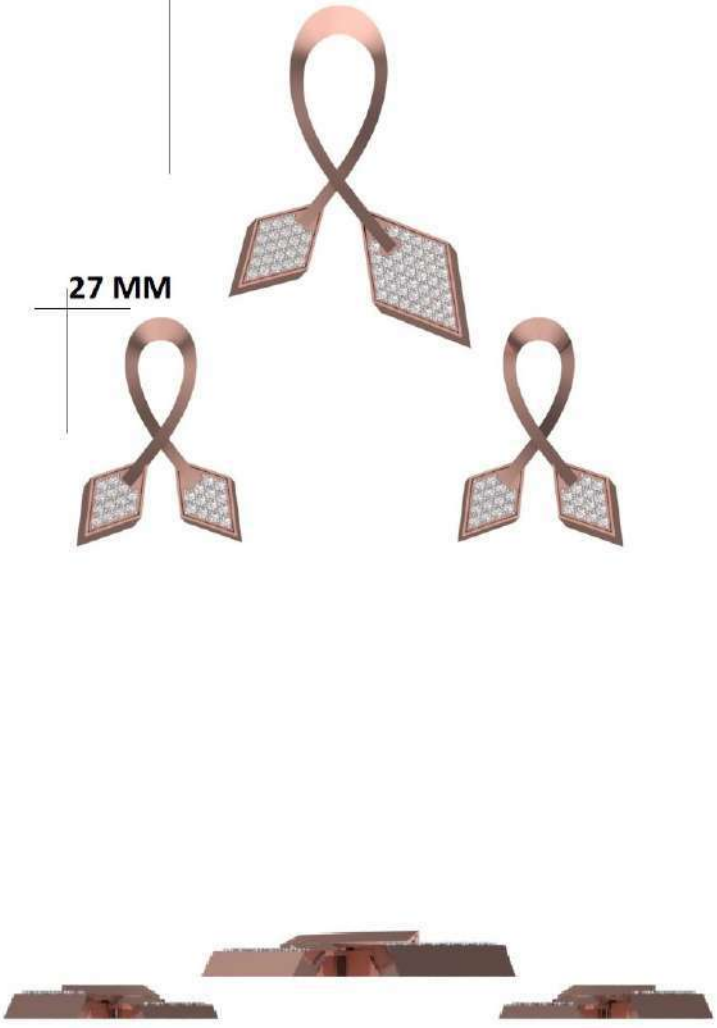
CP1132

41 MM

27 MM

PND
1.30MM-65 PCS
GWT - 4.2 GM (18 KT)

ER
1.30MM-52 PCS
GWT - 4.3 GM(18 KT)



CP1131

40 MM

30 MM



PND
1.00MM-30 PCS
1.20MM-6 PCS
1.30MM-14 PCS
2.00MM-1 PCS
STONE SIZE
3.00X2.00MM-6 PCS
GWT - 4.2 GM (18 KT)

ER
1.00MM-20 PCS
1.10MM-28 PCS
1.20MM-4 PCS
1.60MM-2 PCS
STONE SIZE
2.50X1.50MM-12 PCS
GWT - 3.00GM (18 KT)



CP1130

30 MM



20 MM



PND
1.20MM=33 PCS
1.60MM=12 PCS
4.50MM=1 PCS
GWT = 4.2 GM(18 KT)

ER
1.20MM=44 PCS
1.60MM=24 PCS
4.50MM=1 PCS
GWT = 5.00GM (18 KT)



CP1129

30 MM

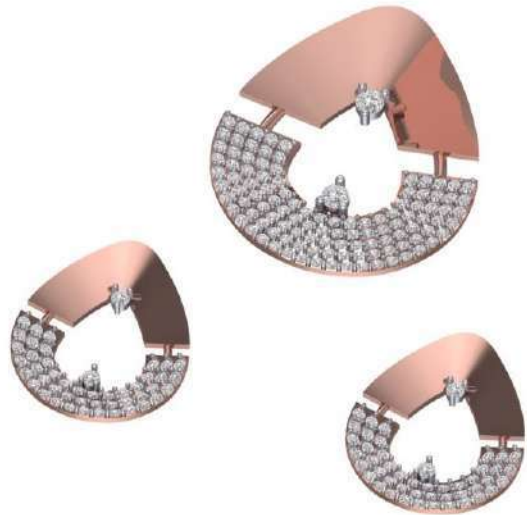


20 MM



PND
1.30MM-110 PCS
2.50MM-2 PCS
GWT - 3.5 GM (18 KT)

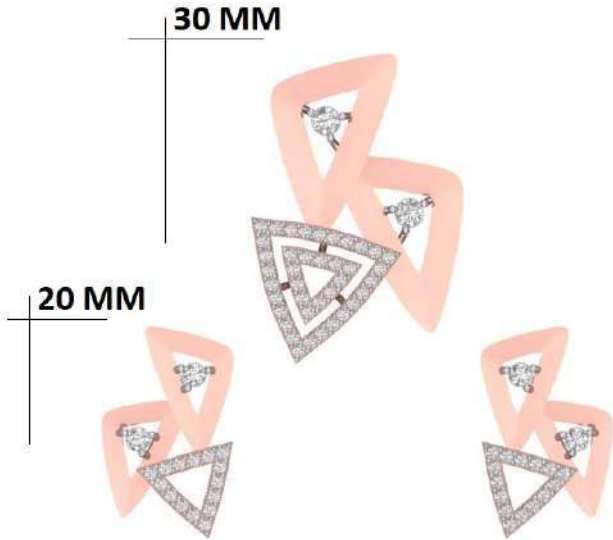
ER
1.30MM-90 PCS
1.60MM-4 PCS
GWT - 3.00 GM (18 KT)



CP1127

PND
1.30MM-39 PCS
2.70MM-2 PCS
GWT - 3.3 GM (18 KT)

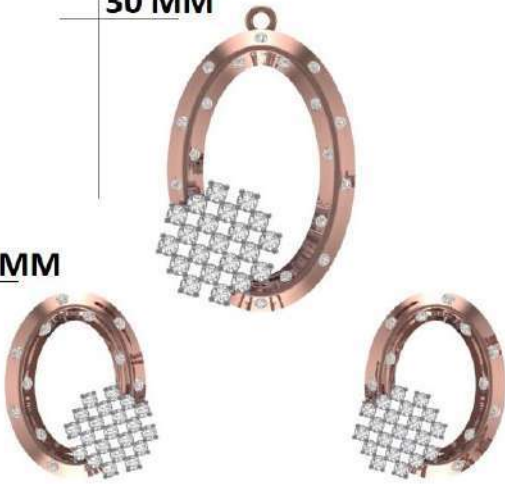
ER
1.30MM-30 PCS
2.20MM-4 PCS
GWT - 2.9 GM (18 KT)



CP1124

30 MM

20 MM



PND

1.30MM--17 PCS

2.00MM-21 PCS

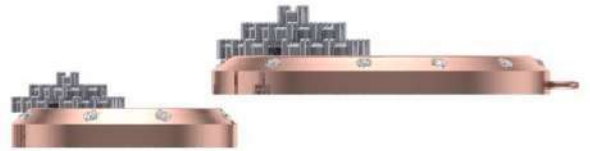
GWT - 3.5 GM (18 KT)

ER

1.30MM-22 PCS

1.50MM-42 PCS

GWT - 3.6 GM(18 KT)



CP1114

Pnd -
1.20 mm - 40 pcs
1.30 mm - 14 pcs
2.80 mm - 02 pcs
stone - 4.00x2.50 mm - 08 pcs
gwt - 5.5 GM (18 kt)

ER -
1.20 mm - 32 pcs
2.80 mm - 02 pcs
stone - 4.00x2.50 mm -10 pcs
Gwt - 4.00 gm (18 kt)

37 mm

33 mm



CP1115

39 MM

26 MM



PND
1.30MM-54 PCS
GWT -4.00 GM (18 KT)

ER
1.30MM-44 PCS
GWT -4.00 GM (18 KT)



CP1123

31 mm



16 mm

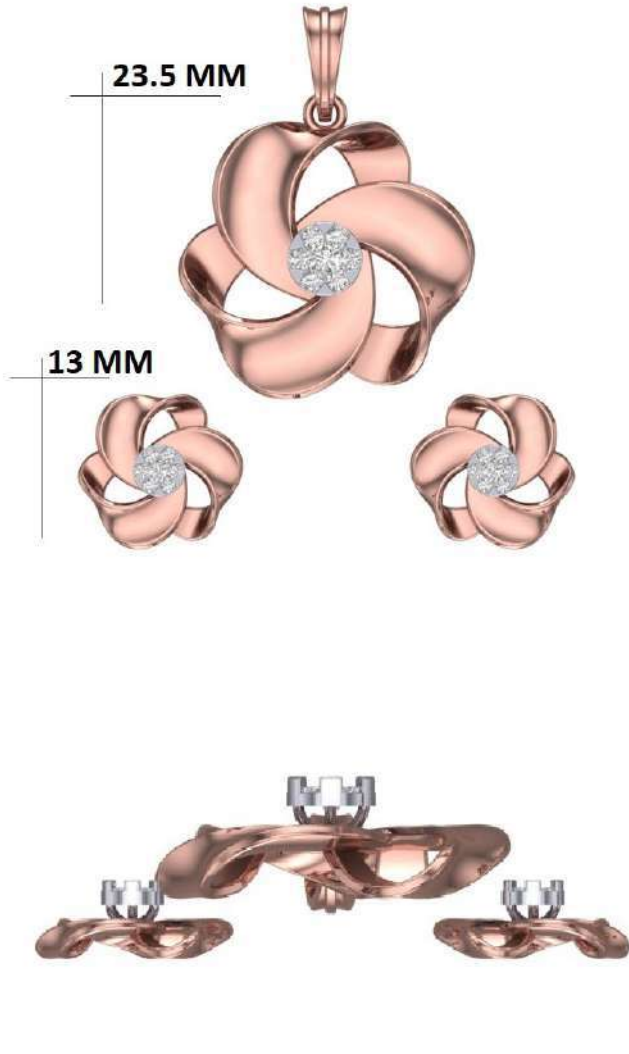


Pnd
1.40 mm - 95 pcs
stone - 6.50 mm
Gwt - 7.7 gm (18 kt)

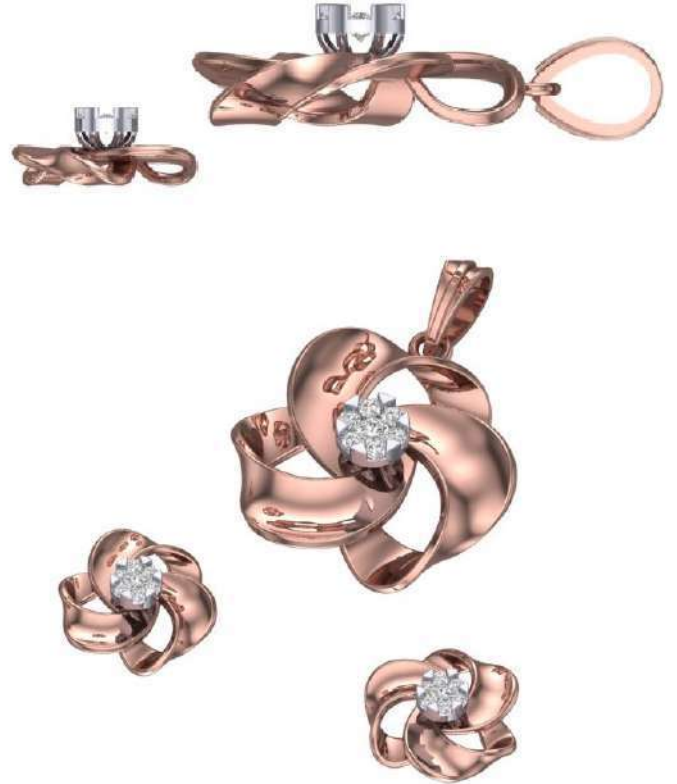
Er
1.10 mm - 12 pcs
1.40 mm - 46 pcs
stone - 3.00 mm - 02 pcs
gwt - 3.30 gm (18 kt)



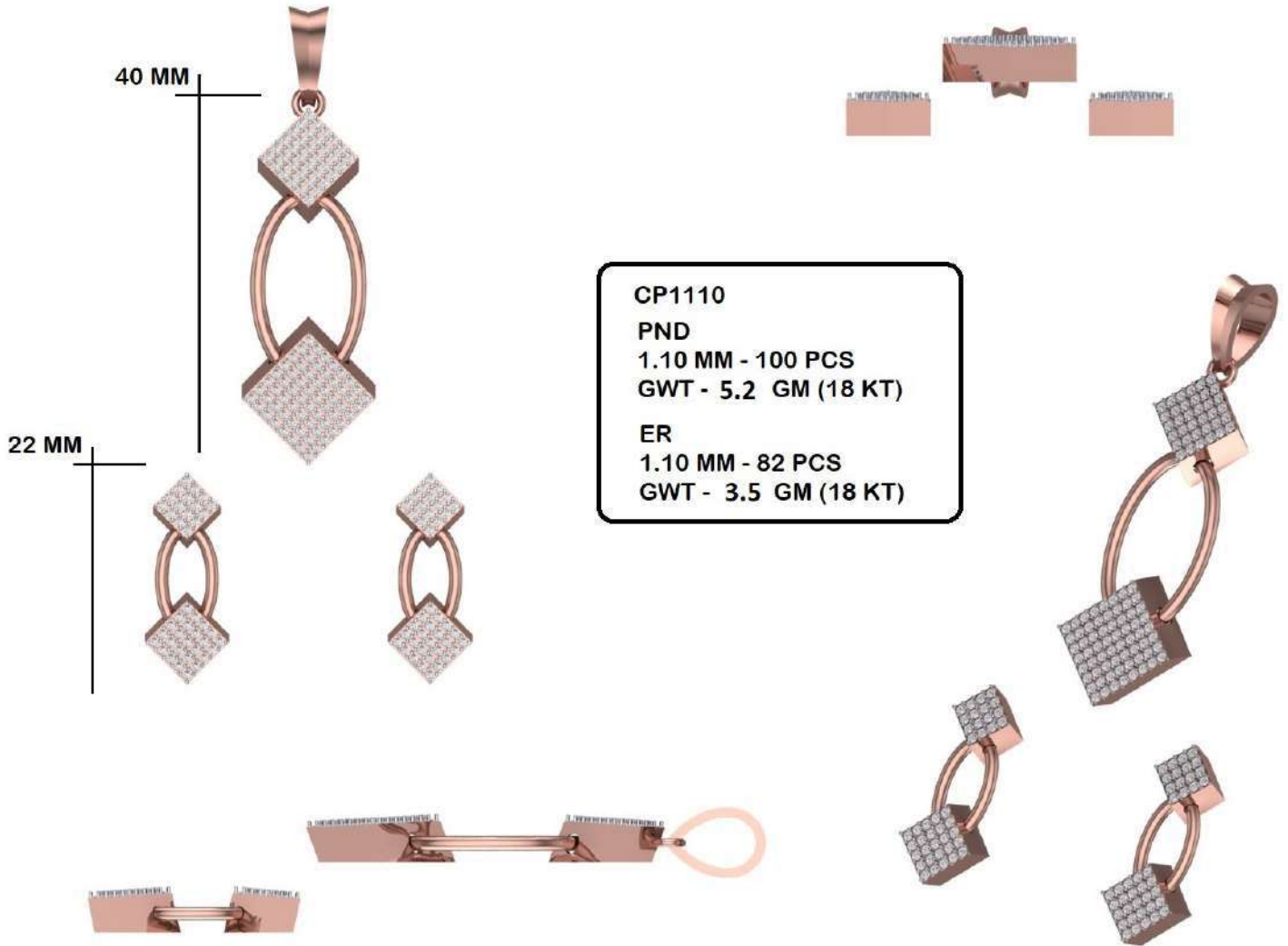
CP1113



PND	ER
1.90MM-6 PCS	1.30MM-12 PCS
2.90MM-1 PCS	2.10MM-2 PCS
GWT - 5.5 GM (18 KT)	GWT - 2.6 GM(18 KT)



CP1110



CP1104



PND
1.00MM-21 PCS
1.10MM-29 PCS
1.20MM-19 PCS
STONE SIZE
8.00X5.00MM-1 PCS
GWT - 5.5 GM (18 KT)

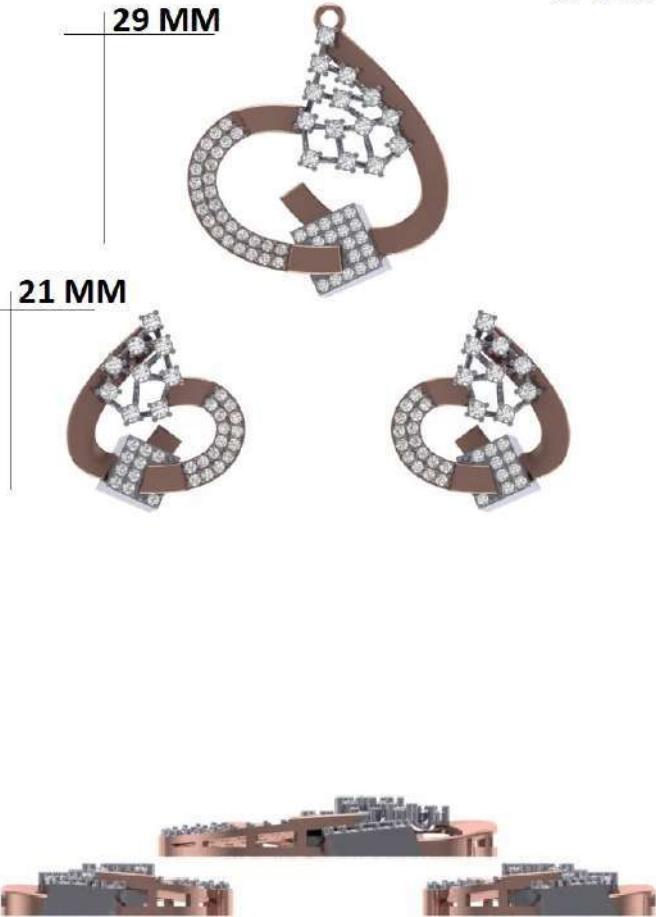
ER
0.90MM-2 PCS
1.00MM-24 PCS
1.20MM-24 PCS
STONE SIZE
5.00X3.00MM-2 PCS
GWT - 4.00 GM (18 KT)



CP1103

29 MM

21 MM



PND
1.30MM-46 PCS
1.80MM-14 PCS
GWT -4.2 GM(18 KT)

ER
1.30MM-52 PCS
1.80MM-18 PCS
GWT -6.00 GM (18 KT)



CP1099

PND
1.30MM-150 PCS
3.00MM-1 PCS
STONE SIZE
6.00X4.00MM-1 PCS
GWT - 8.6 GM (18 KT)

ER
1.30MM-126 PCS
2.00MM-2 PCS
STONE SIZE
5.00X3.00MM-2 PCS
GWT - 6.5 GM (18 KT)

52 MM

30 MM



CP1089

PND
1.30MM-146 PCS
GWT - 3.5 GM (18 KT)

ER
1.30MM-74 PCS
GWT - 3.2 GM (18 KT)

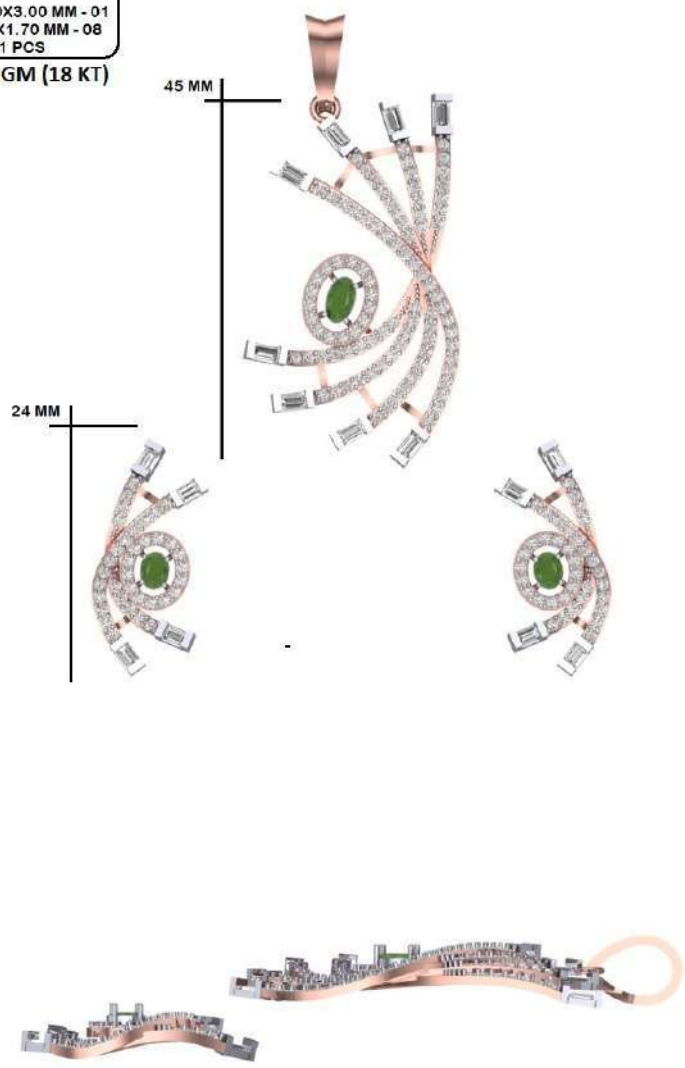
41.5 MM

22.5 MM



CP1086
PND
STONE
OVEL - 5.00X3.00 MM - 01
BUG - 3.00X1.70 MM - 08
1.30 MM - 91 PCS
GWT - 4.6 GM (18 KT)

ER
STONE
OVEL - 4.00X3.00 MM - 02 PCS
BUG - 2.50X1.70 MM - 08 PCS
1.30 MM - 72 PCS
GWT - 3.3 GM (18 KT)



AP1021

PND
1.30MM=110 PCS
STONE SIZE
6.00X4.00MM=1 PCS
GWT = 7.9 GM (18 KT)

ER
1.30MM=48 PCS
STONE SIZE
4.00X3.00MM=2 PCS
GWT = 3.3 (18 KT)



AP1020

PND
1.20MM=56 PCS
1.30MM=97 PCS
1.40MM=28 PCS
STONE SIZE
7.00X5.00MM=1 PCS
GWT = 8.8 GM (18 KT)

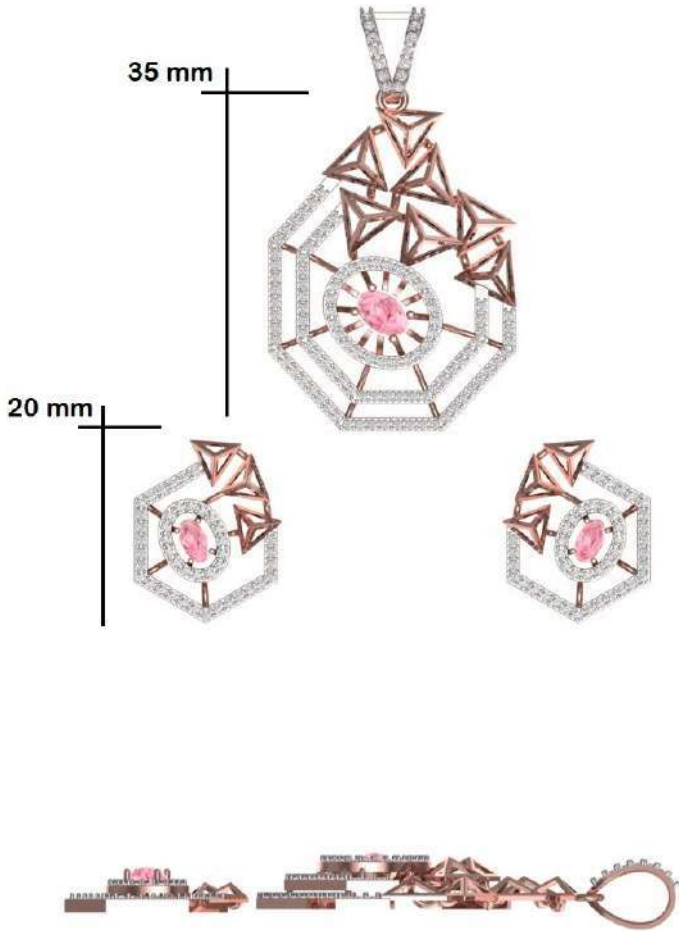
ER
1.10MM=56 PCS
1.20MM=56 PCS
1.30MM=26 PCS
STONE SIZE
4.00X3.00MM=2 PCS
GWT = 5.4 GM (18 KT)



AP1019

Pnd
1.20 mm - 98 pcs
1.30 mm - 14 pcs
Stone - 6.00x4.00 mm
gwt - 4.7 GM (18 kt)

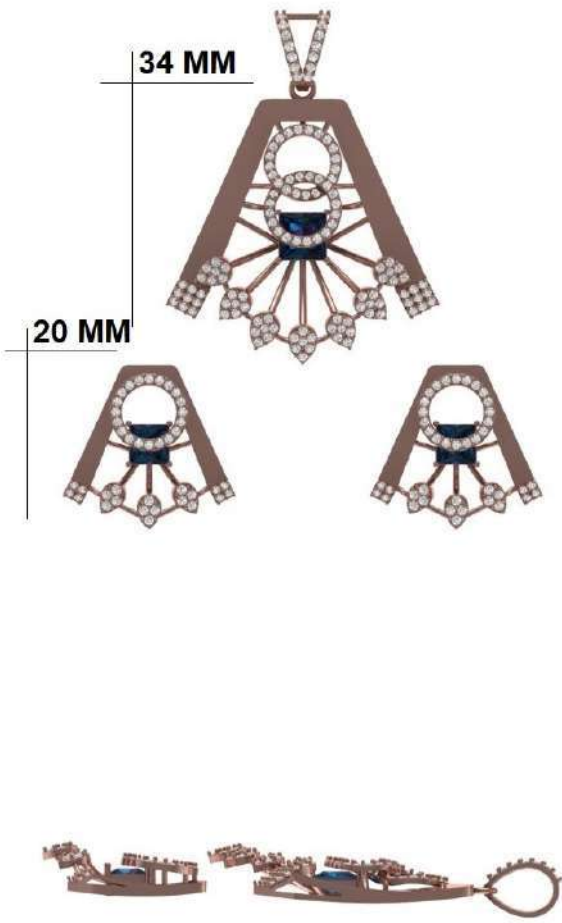
ER
1.20 mm - 86 pcs
Stone - 5.00x3.00 mm
Gwt - 2.8 GM (18 kt)



AP1018

PND
1.10MM=7 PCS
1.20MM=98 PCS
1.30MM=14 PCS
STONE SIZE
6.00X6.00MM=1 PCS
GWT = 6.3 GM (18 KT)

ER
1.10MM=16 PCS
1.20MM=40 PCS
1.30MM=24 PCS
STONE SIZE
5.00X5.00MM=1 PCS
GWT = 4.8 GM (18 KT)



AP1017

PND
1.20 MM - 84 PCS
1.30 MM - 19 PCS
GWT - 5.2 GM (18 KT)

ER
1.30 MM - 72 PCS
GWT - 3.5 GM (18 KT)



AP1016



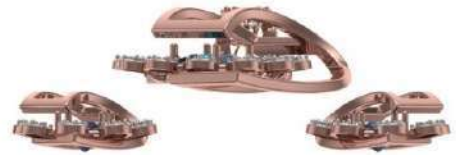
ER
RD:.
1.00MM - 32
1.10MM - 32
1.20MM - 8
1.60MM - 2
GOLD WT:.
18KT 3.6 GM

PD
RD:.
1.00MM - 14
1.20MM - 49
1.30MM - 48
1.8MM - 1
GOLD WT:.
18KT 5.2 GM

AP1014

PND
1.20MM=112 PCS
1.30MM=14 PCS
STONE SIZE
6.00X6.00MM=1 PCS
GWT - 8.8 GM (18 KT)

ER
1.10MM=84 PCS
STONE SIZE
5.00X5.00MM=1 PCS
GWT = 7 GM (18 KT)



AP1013

PND
1.10MM=7 PCS
1.20MM=98 PCS
1.30MM=14 PCS
STONE SIZE
7.00X5.00MM=1 PCS
GWT = 5 GM (18 KT)

ER
1.20MM=78 PCS
1.40MM=14 PCS
STONE SIZE
4.00X3.00MM=1 PCS
GWT - 4.5 GM (18 KT)



AP1012

PND

1.10MM=3 PCS

1.20MM=72 PCS

1.30MM=115 PCS

STONE SIZE

7.00X5.00MM=1 PCS

GWT-7.6 GM (18 KT)

ER

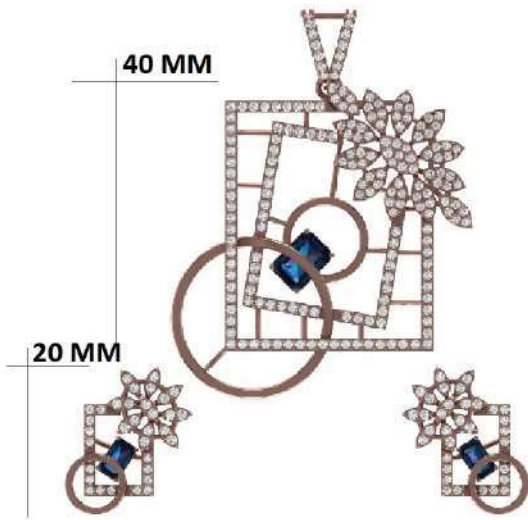
1.20MM=30 PCS

1.30MM=36 PCS

STONE SIZE

5.00X3.00MM=1 PCS

GWT = 4 GM (18 KT)



AP1038

PND
1.30MM-116 PCS
STONE SIZE
8.00X6.00MM-1 PCS
GWT - 5.4 GM (18 KT)

ER
1.40MM-68 PCS
STONE SIZE
5.00X3.00MM-2 PCS
GWT - 3.6 GM (18 KT)



AP1048

38 MM



22 MM



PND

1.20MM-46 PCS

1.30MM-49 PCS

1.40MM-6 PCS

STONE SIZE

6.00X4.00MM-1 PCS

GWT - 4.2 GM (18 KT)

ER

1.00MM-10 PCS

1.10MM-2 PCS

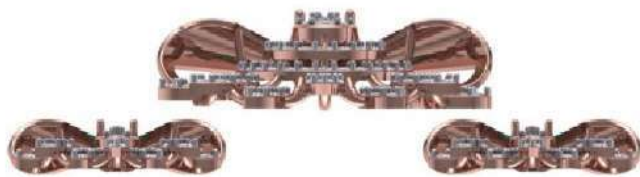
1.20MM-30 PCS

1.30MM-28 PCS

STONE SIZE

4.00X2.50MM-2 PCS

GWT - 3.5 GM (18 KT)



AP1047

PND
1.00MM-80 PCS
1.20MM-58 PCS
1.30MM-14 PCS
STON SIZE
5.00X3.00MM-1 PCS
GWT - 5.5 GM (18 KT)

ER
1.00MM-108 PCS
STONE SIZE
4.50X2.50MM-2 PCS
GWT - 3.5 GM (18 KT)

27 MM

18 MM



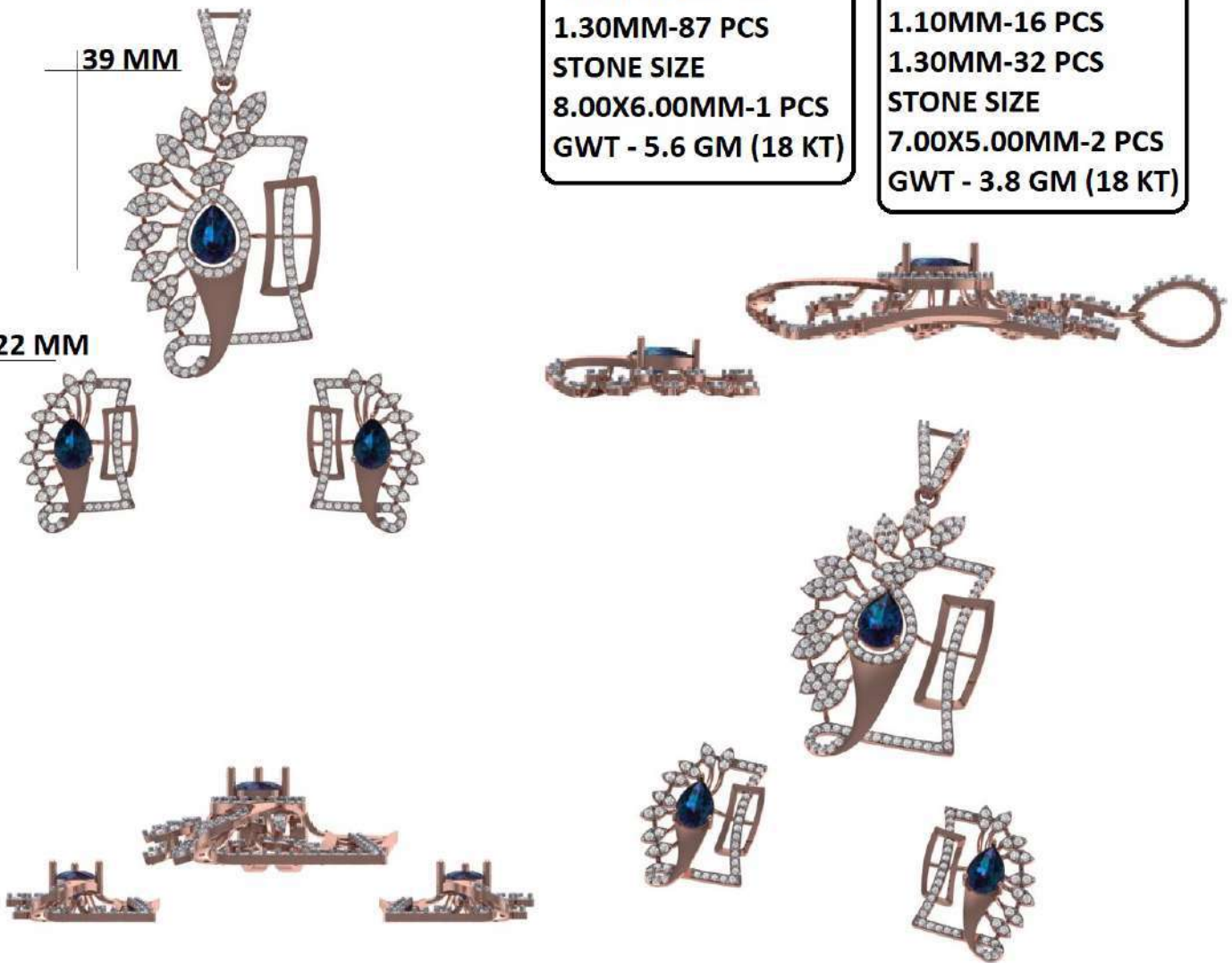
AP1046

PND
1.20MM-62 PCS
1.30MM-87 PCS
STONE SIZE
8.00X6.00MM-1 PCS
GWT - 5.6 GM (18 KT)

ER
1.00MM-36 PCS
1.10MM-16 PCS
1.30MM-32 PCS
STONE SIZE
7.00X5.00MM-2 PCS
GWT - 3.8 GM (18 KT)

39 MM

22 MM



AP1043

PND
1.20MM-53 PCS
1.30MM-14 PCS
1.40MM-22 PCS
STONE SIZE
7.00X5.00MM-1 PCS
GWT - 5 GM (18 KT)

ER
1.20MM-46 PCS
STONE SIZE
4.00X2.50MM-2 PCS
GWT - 2.50 GM (18 KT)



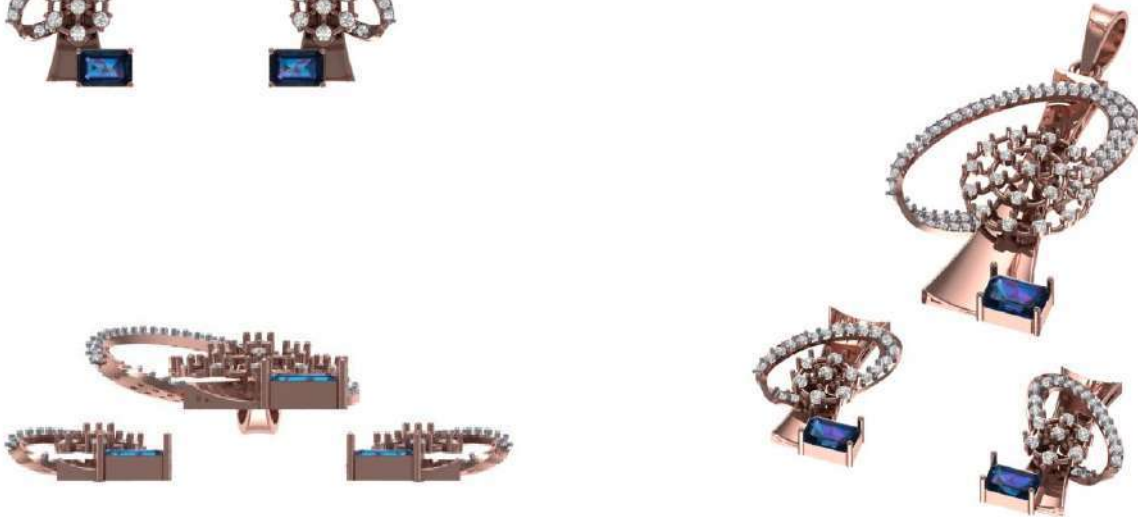
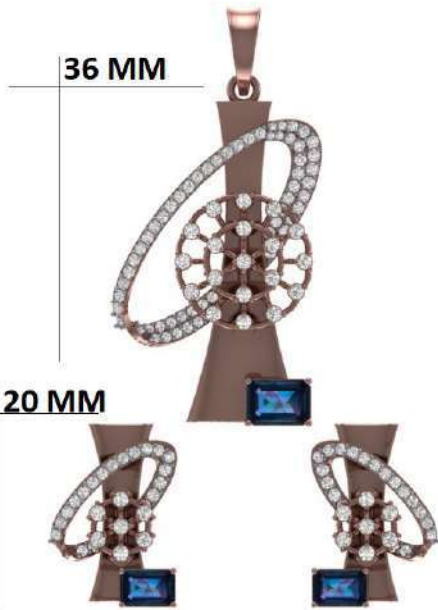
19 MM



AP1042

PND
1.00MM-4 PCS
1.10MM-2 PCS
1.20MM-14 PCS
1.30MM-31 PCS
1.40MM-8 PCS
1.70MM-19 PCS
STONE SIZE
7.00X5.00MM-1 PCS
GWT - 5.7 GM (18 KT)

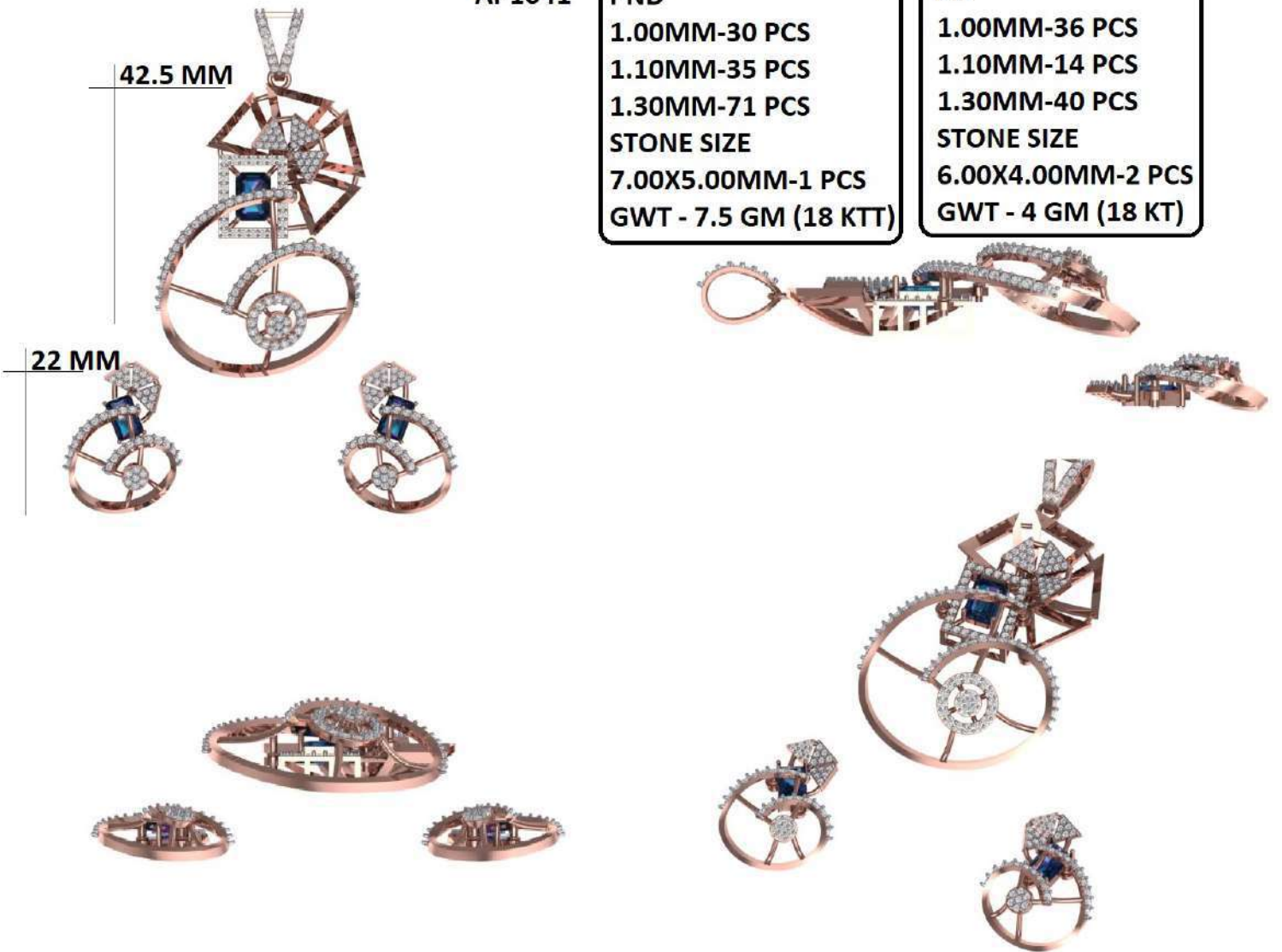
ER
1.20MM-2 PCS
1.30MM-30 PCS
1.40MM-6 PCS
1.70MM-14 PCS
STONE SIZE
6.00X4.00MM-2 PCS
GWT - 4.6 GM (18 KT)



AP1041

PND
1.00MM-30 PCS
1.10MM-35 PCS
1.30MM-71 PCS
STONE SIZE
7.00X5.00MM-1 PCS
GWT - 7.5 GM (18 KTT)

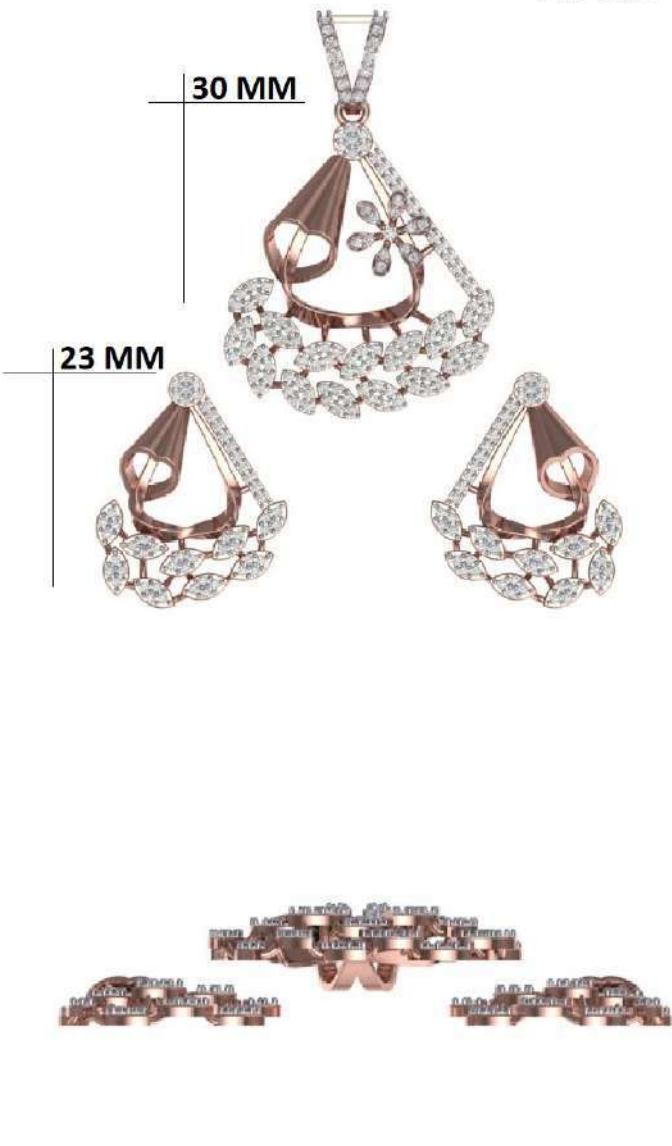
ER
1.00MM-36 PCS
1.10MM-14 PCS
1.30MM-40 PCS
STONE SIZE
6.00X4.00MM-2 PCS
GWT - 4 GM (18 KT)



AP1039

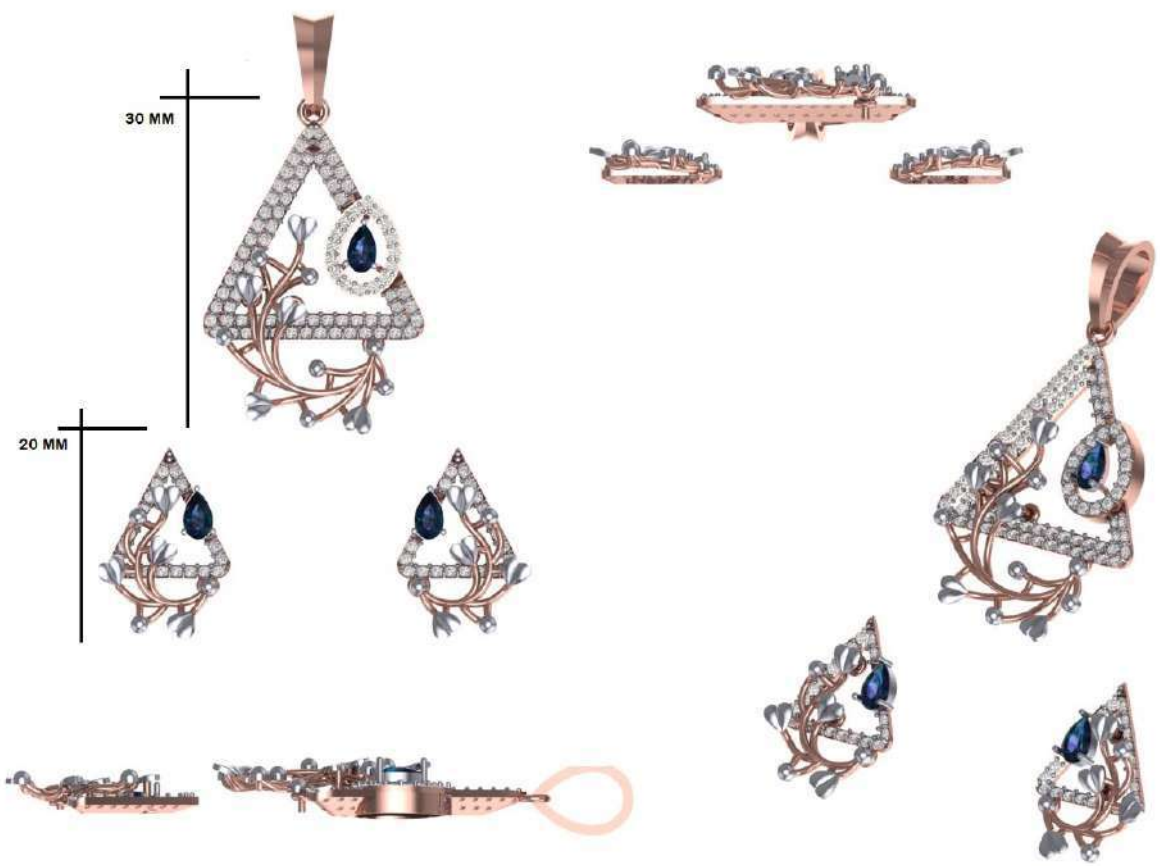
PND
1.00MM-6 PCS
1.10MM-21 PCS
1.20MM-84 PCS
1.30MM-20 PCS
1.50MM-1 PCS
GWT - 5 GM (18 KT)

ER
1.00MM-34 PCS
1.10MM-72 PCS
GWT - 5 GM (18 KT)



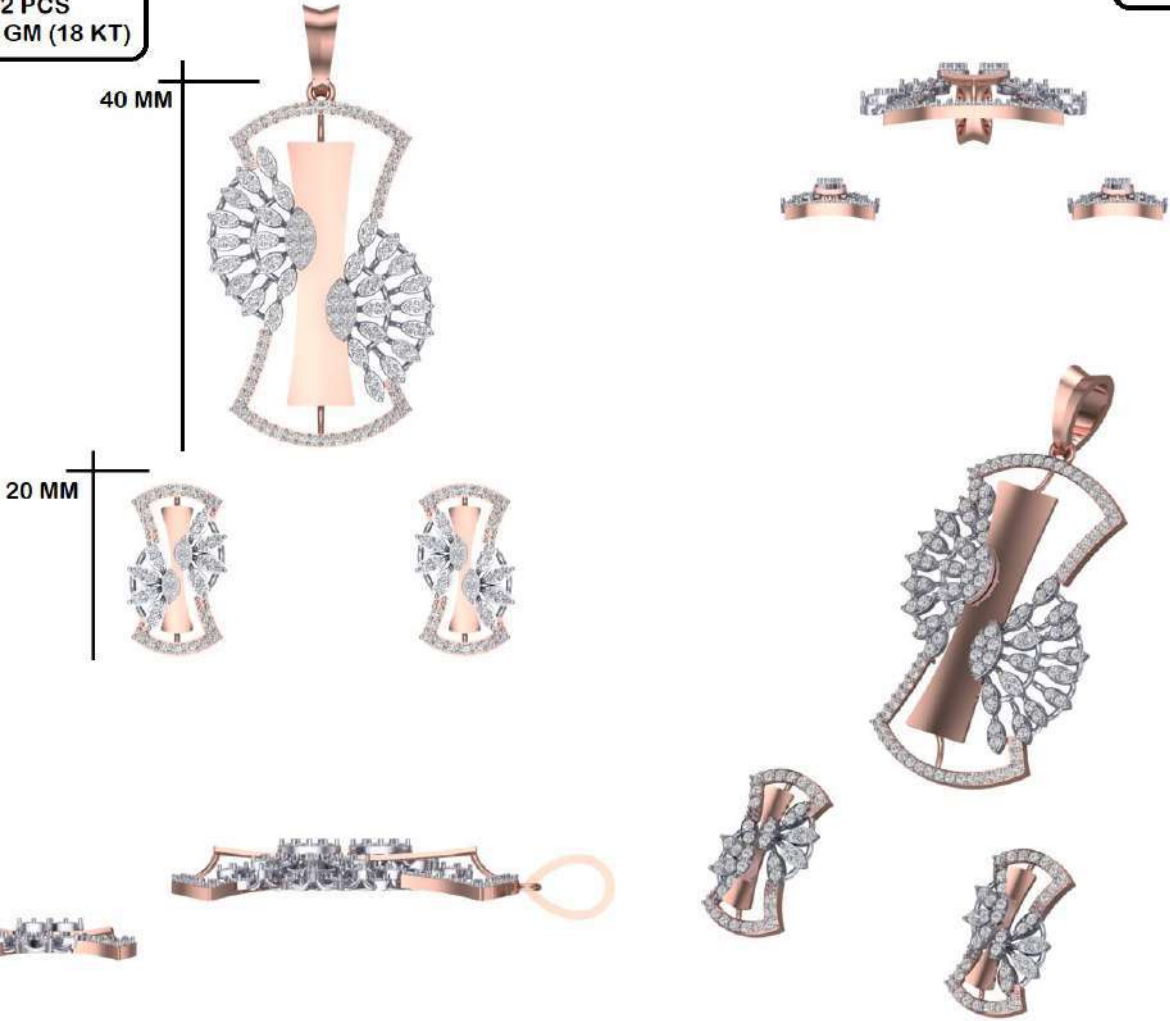
AP1044
PND
STONE - 5.00X3.00 MM - 01 PCS
1.20 MM - 05 PCS
1.30 MM - 16 PCS
1.40 MM - 65 PCS
GWT - 4.30 GM (18 KT)

ER
STONE - 5.00X3.00 MM - 02 PCS
1.30 MM - 40 PCS
GWT - 2.50 GM (18 KT)



AP1040
PND
1.30 MM - 48 PCS
1.40 MM - 56 PCS
1.50 MM - 12 PCS
GWT - 6.30 GM (18 KT)

ER
1.30 MM - 36 PCS
1.40 MM - 40 PCS
GWT - 3.40 GM (18 KT)



AP1033
PND
STONE - 5.00X2.50 MM - 06 PCS
1.10 MM - 01 PCS
1.20 MM - 02 PCS
1.30 MM - 80 CPS
GWT - 5.55 GM (18 KT)

ER
STONE - 5.00X2.50 MM - 02 PCS
1.20 MM - 02 PCS
1.30 MM - 54 PCS
GWT - 3.50 GM (18 KT)

32 MM

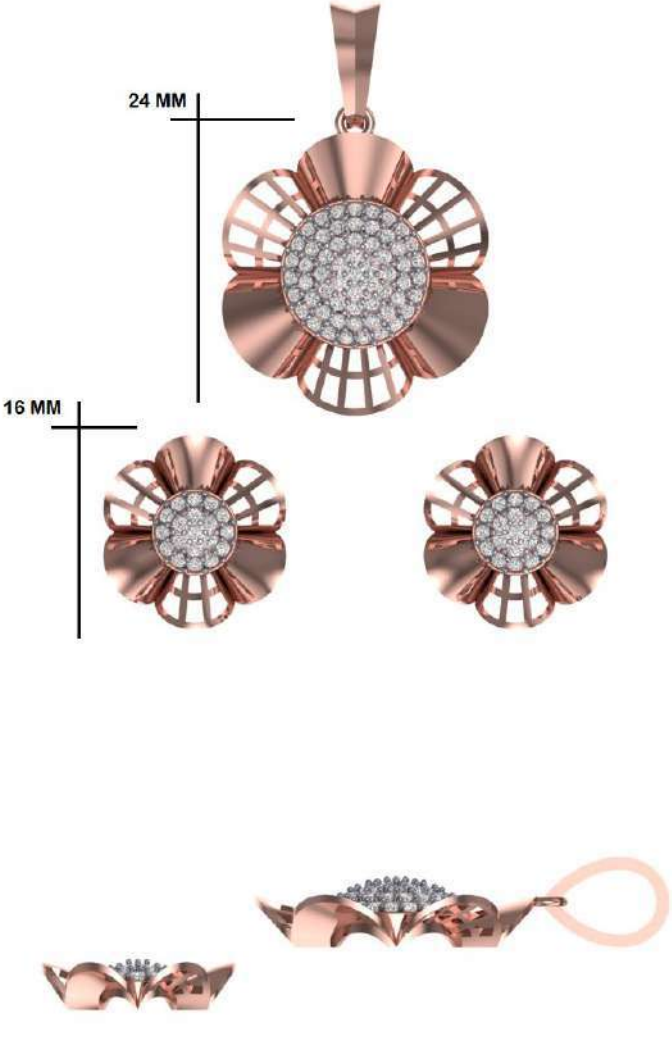


20 MM



PND
1.30 MM - 60 PCS
GWT - 4.00 GM (18 KT)

ER
1.30 MM - 38 PCS
GWT - 3.00 GM (18 KT)



30 MM



17 MM



STONE - 8.00X5.00 MM - 01 PCS
1.30 MM - 84 PCS
GWT - 5.00 GM (18 KT)

STONE - 5.00X3.00 MM - 02 PCS
1.30 MM - 28 PCS
1.40 MM - 32 PCS
GWT - 3.60 GM (18 KT)



34 MM



20 MM



PND
STONE - 9.00X7.00 MM - 01 PCS
1.30 MM - 112 PCS
GWT - 6.10 GM (18 KT)

ER
STONE - 5.00X3.00 MM - 02 PCS
1.30 MM - 78 PCS
GWT - 3.50 GM (18 KT)





PND
1.40 MM - 14 PCS
1.30 MM - 56 PCS
GWT - 3.00 GM (18 KT)

ER
1.30 MM - 82 PCS
GWT - 2.50 GM (18 KT)



36 MM

BP1169

PND

1.30MM-125 PCS

1.60MM-6 PCS

STONE SIZE

4.00X2.50MM-7 PCS PEAR

7.50X5.50MM-1 PCS EMD

GWT - 6.8 GM (18 KT)

ER

1.30MM-116 PCS

STONE SIZE

4.00X2.50MM-8 PCS PEAR

5.00X3.00MM-1 PCS EMD

GWT - 5.7 GM (18 KT)

24 MM



BP1164

36 MM



PND
1.0MM-9 PCS
1.20MM-63 PCS
1.30MM-18 PCS
STONE SIZE
3.00X2.00MM-9 PCS
GWT - 4 GM (18 KT)

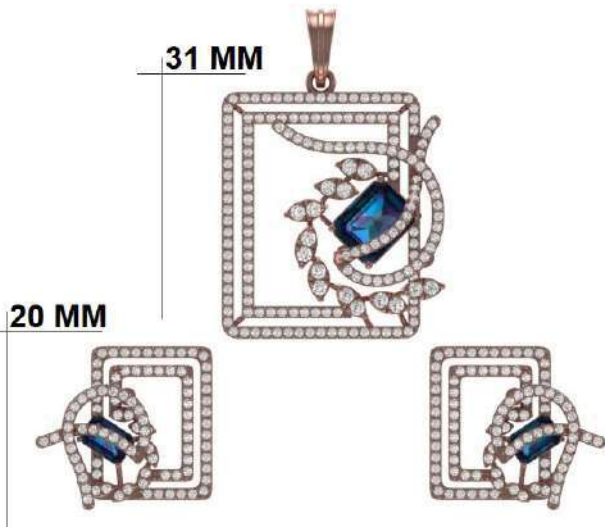
ER
1.10MM-14 PCS
1.20MM-28 PCS
1.30MM-14 PCS
STONE SIZE
3.00X2.00MM-8 PCS
GWT - 3 GM (18 KT)



CP1082

PND
1.20MM=158 PCS
1.90MM=16 PCS
STONE SIZE
9.00X7.00MM=1 PCS
GWT = 6.8 GM (18 KT)

ER
1.20MM=188 PCS
STONE SIZE
6.00X4.00MM=2 PCS
GWT = 6 GM (18 KT)



AP1029

PND
1.20MM=75 PCS
1.30MM=32 PCS
STONE SIZE
4.50X4.50MM=1 PCS
GWT = 5 GM (18 KT)

ER
1.20MM=80 PCS
STONE SIZE
3.00X3.00MM=2 PCS
GWT = 3.4 GM (18KT)



AP1027



PND
1.20MM=90 PCS
1.30MM=14 PCS
2.00MM=7 PCS
STONE SIZE
6.00X4.00MM=1 PCS
GWT = 4 GM (18 KT)

ER
1.20MM=64 PCS
STONE SIZE
5.00X3.00MM=2 PCS
GWT = 3 GM (18 KT)



AP1031

Pnd
1.20 mm - 79 pcs
1.30 mm - 06 pcs
1.40 mm - 24 pcs
Gwt - 4.20 gm (18 kt)

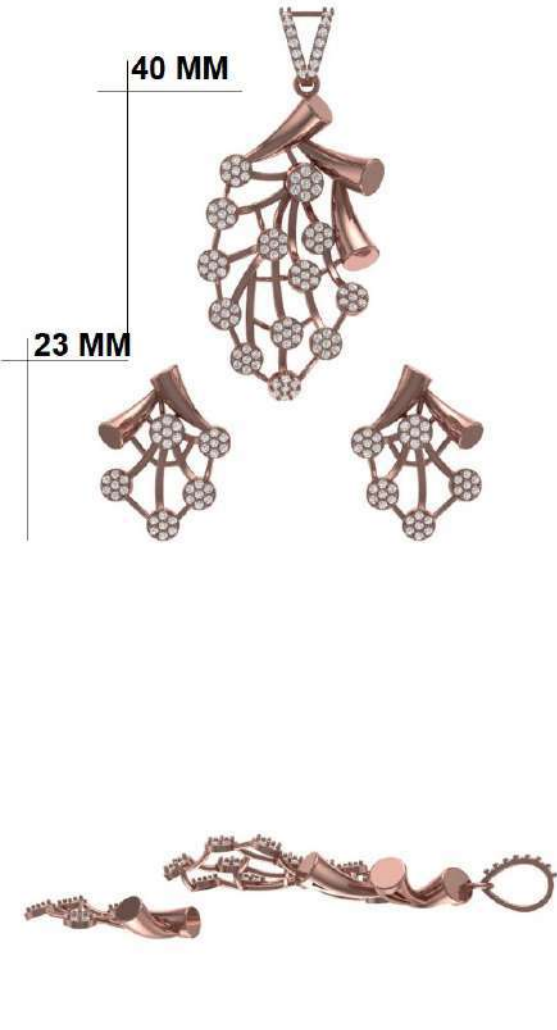
Er
1.20 mm - 54 pcs
Gwt - 2.80 gm (18 kt)



AP1032

PND
1.20MM=84 PCS
1.30MM=14 PCS
1.40MM=7 PCS
GWT = 5.8 GM (18 KT)

ER
1.20MM=56 PCS
1.30MM=4 PCS
GWT = 5.8 GM (18 KT)



AP1026

PND
1.20MM=107 PCS
1.30MM=14 PCS
1.40MM=18 PCS
STONE SIZE
5.00X3.00MM=1 PCS
GWT = 6.8 GM (18 KT)

ER
1.20MM=96 PCS
STONE SIZE
4.00X3.00MM=2 PCS
GWT = 4.2 GM (18 KT)



AP1025

PND
1.20MM=134 PCS
1.30MM=14 PCS
STONE SIZE
6.00X6.00MM=1 PCS
GWT = 6 GM (18 KT)

ER
1.20MM=28 PCS
1.40MM=56 PCS
STONE SIZE
4.00X4.00MM=2 PCS
GWT = 4 GM (18 KT)

34.5 MM

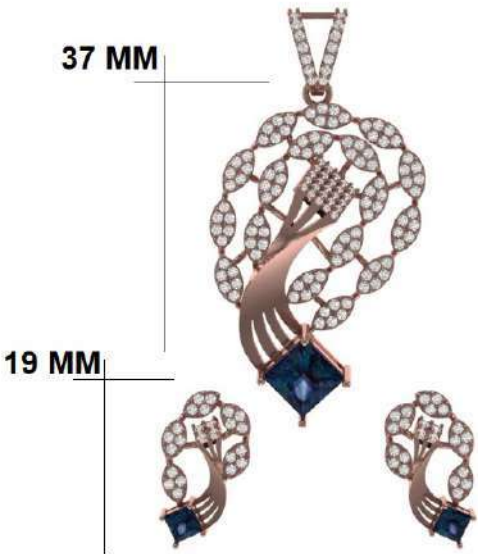
22 MM



AP1023

PND
1.10MM=25 PCS
1.30MM=116 PCS
STONE SIZE
7.00X7.00MM=1 PCS
GWT = 7.20 GM (18 KT)

ER
1.30MM=40 PCS
1.40MM=8 PCS
STONE SIZE
3.50X3.50MM=1 PCS
GWT = 2.80 GM (18 KT)



AP1030

27 mm



15 mm

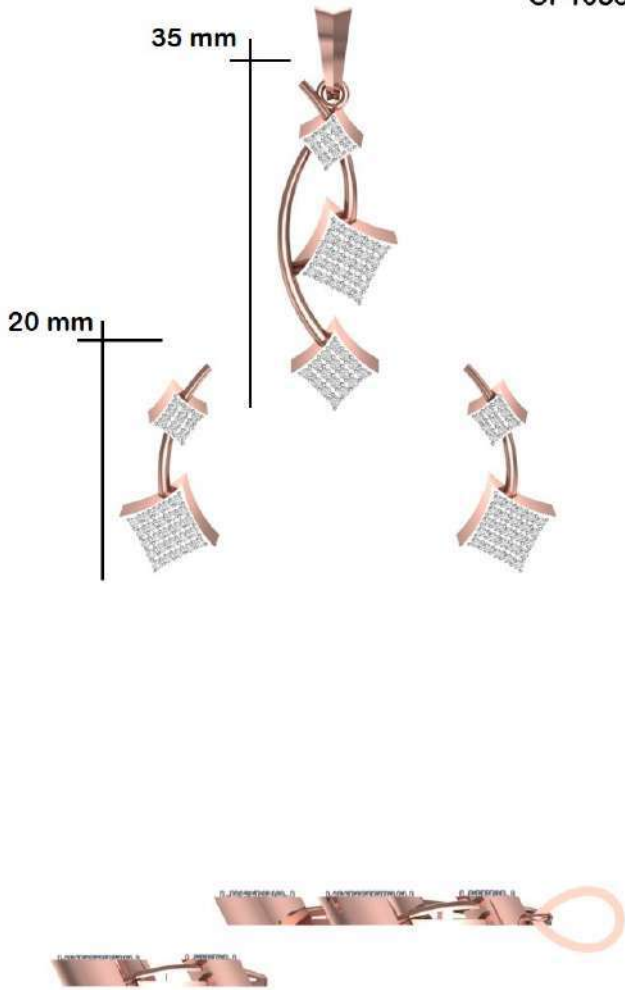


Pnd
1.10 mm - 02 pcs
1.20 mm - 77 pcs
1.30 mm - 14 pcs
stone - 8.00X5.00 mm
gwt - 4.40 gm (18 kt)

ER
1.10 mm - 02 pcs
1.20 mm - 56 pcs
stone - 4.00X2.50 mm
Gwt - 2.40 gm (18 kt)



CP1083-



Pnd
1.20 mm - 50 pcs
Gwt - 3.70 gm (18 kt)

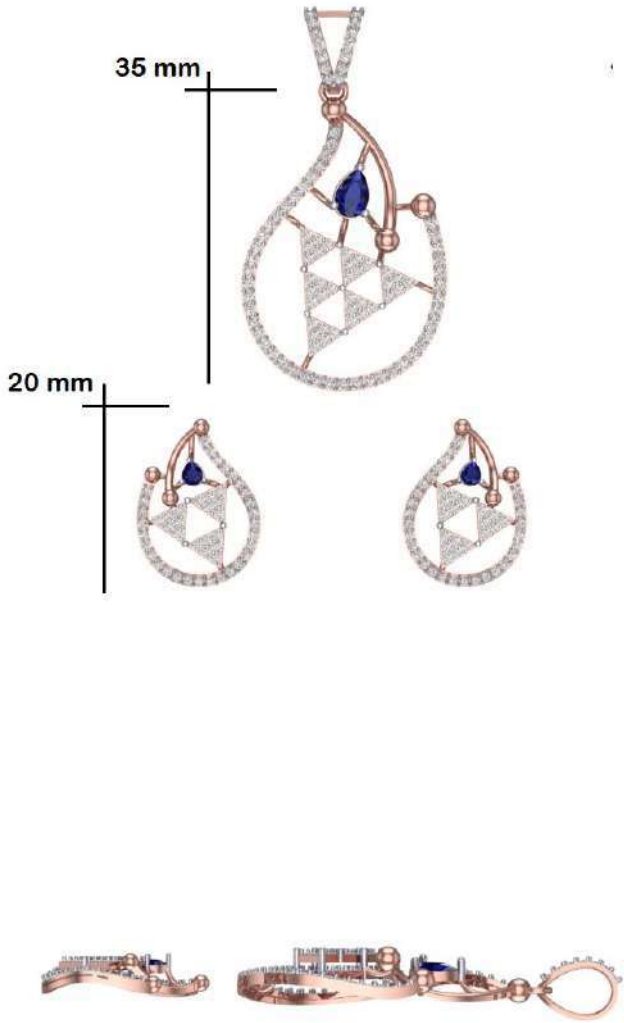
ER
1.10 mm - 68 pcs
Gwt - 2.70 gm (18 kt)



AP1022

Pnd
1.20 mm - 36 pcs
1.30 mm - 14 pcs
1.40 mm - 43 pcs
Stone - 6.00x4.00 mm
Gwt - 4.20 gm (18 kt)

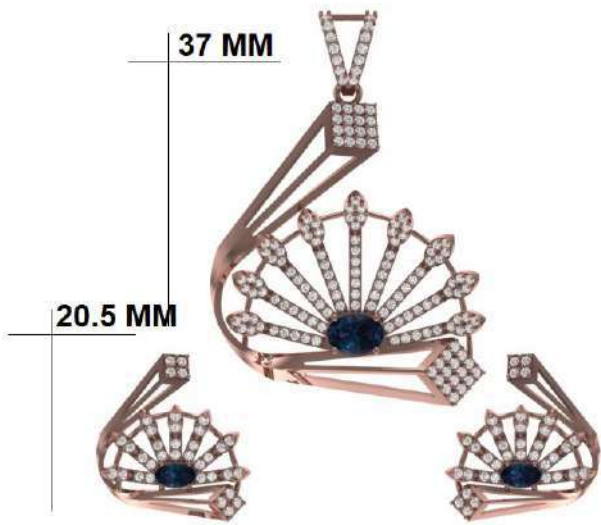
ER
1.20 mm - 92 pcs
Stone - 3.00x2.00 mm
Gwt - 3.50 gm (18 kt)



AP1015

PND
1.20MM=107 PCS
1.30MM=46 PCS
STONE SIZE
7.00X5.00MM=1 PCS
GWT = 6.9 GM (18 KT)

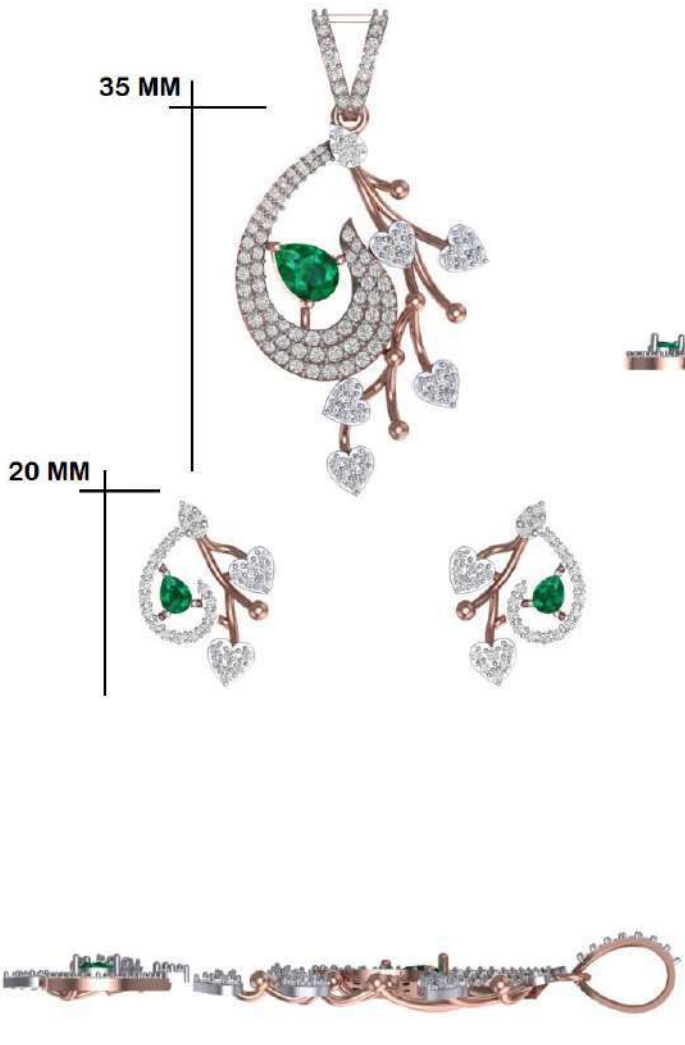
ER
1.20MM=28 PCS
1.30MM=44 PCS
STONE SIZE
5.00X3.00MM=2 PCS
GWT = 3.9 GM (18 KT)



AP1028

ER
1.10 MM - 04 PCS
1.20 MM - 54 PCS
1.30 MM - 04 PCS
STONE - 4.00X3.00 MM
GWT - 3.00 GM(18 KT)

PND
1.00 MM - 10 PCS
1.10 MM - 09 PCS
1.20 MM - 36 PCS
1.30 MM - 21 PCS
1.40 MM - 24 PCS
1.50 MM - 13 PCS
1.60 MM - 03 PCS
STONE - 7.00X5.00 MM
GWT - 5.00 GM (18 KT)



AP1024

PND
1.20 MM - 136 PCS
STONE - 7.00X7.00 MM
GWT - 7.50 GM (18 KT)

ER
1.20 MM - 144 PCS
STONE - 5.00X5.00 MM
GWT - 6.50 GM (18 KT)

